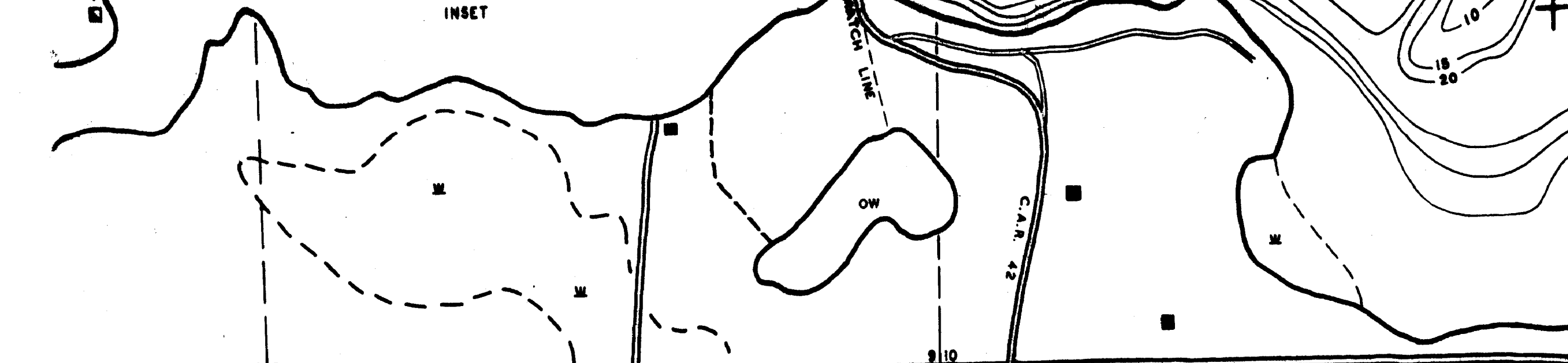
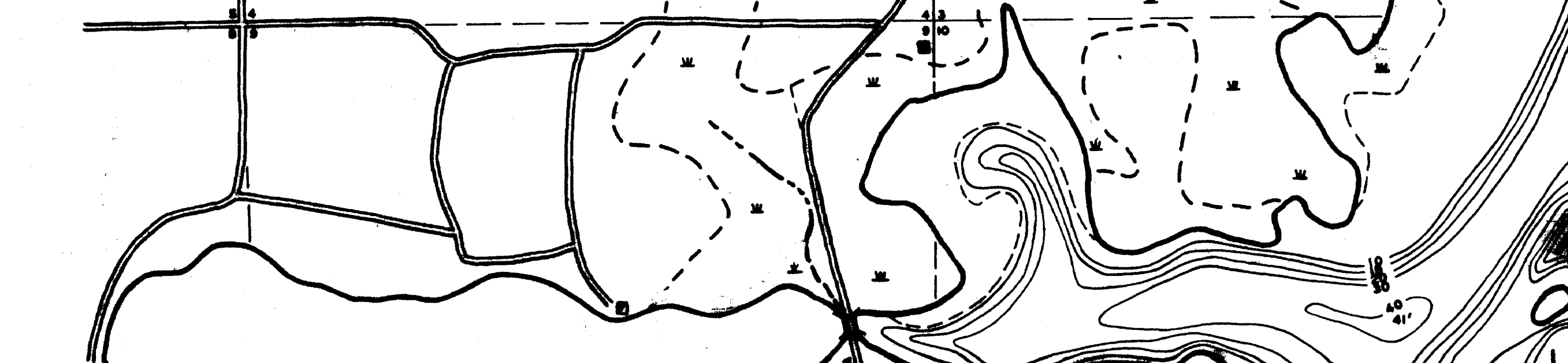
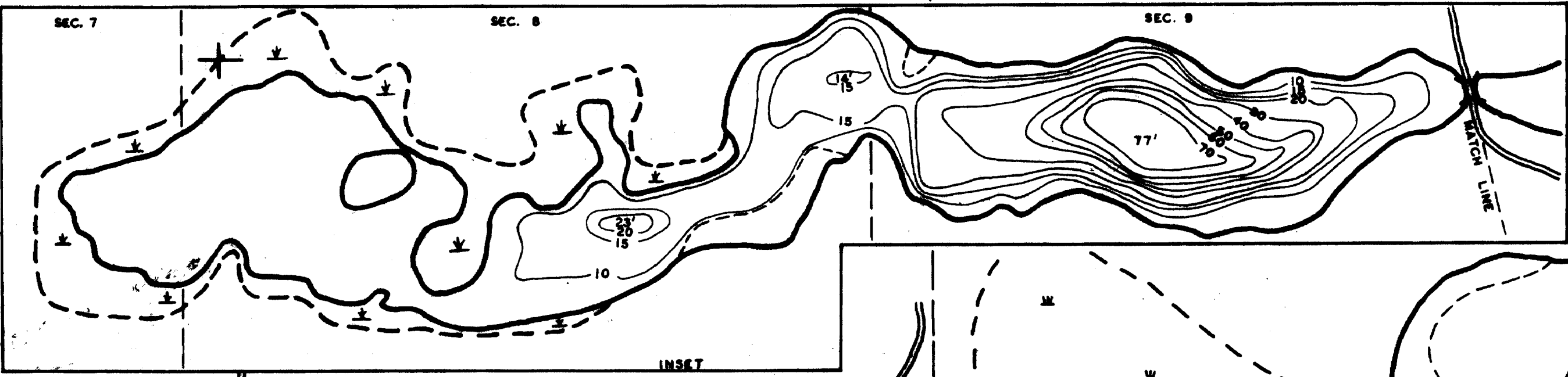


COPYRIGHT 1958
STATE OF MINNESOTA
DEPARTMENT OF NATURAL RESOURCES
DIVISION OF FISH AND WILDLIFE



Minnesota's Bookings
Part of the Department of Conservation
Pine County Office
To order reproductions of
Outdoor Maps call
612/297-2200 or our
National toll-free number
1-800-687-6767



B.M. = N.E. CORNER OF CONCRETE
PLATFORM IN FRONT OF
FIREPLACE AT ABRAMS RESORT.
W.S. = B.M. - 6.3'
AREA = 4721.3 ACRES PLANNIMETERS
REVISED 1-11-68 D.B.D.

STATE OF MINNESOTA DEPARTMENT OF CONSERVATION	
DIVISION OF GAME AND FISH BUREAU OF RESEARCH AND PLANNING	
STAR LAKE 56-385 OTTER TAIL COUNTY	
SEC. 8, T. 136 N. R. 40 W.	
FIELDWORK H.K.G.L.	DRAWN BY D.S.L.
DATE 10-4-58	DATE 3-28-57
PROJECT NO. 612 P. 10	

B-0231