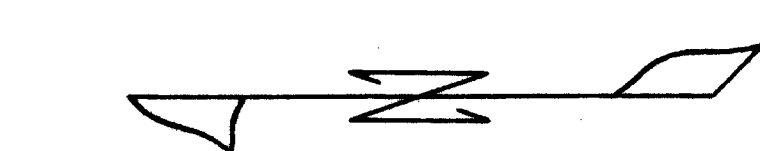
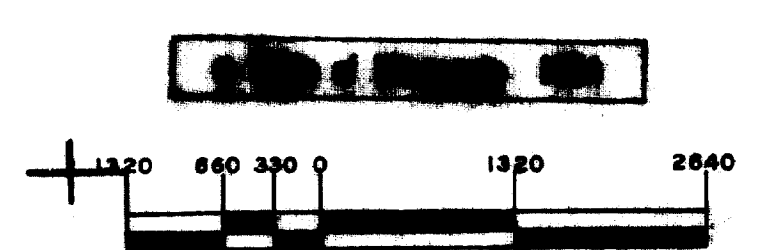


Minnesota's Recreational
 Department of Administration
 Part of the Department of Administration
 Fish Commission
 Trout and Salmon Division
 616/297-6550 ext. 407
 National Wildlife Refuge System
 1-800-637-6767



© COPYRIGHT 1983
 STATE OF MINNESOTA
 DEPARTMENT OF NATURAL RESOURCES
 DIVISION OF FISH AND WILDLIFE



STATE OF MINNESOTA
 DEPARTMENT OF CONSERVATION
 DIVISION OF GAME AND FISH
 RESEARCH AND PLANNING SECTION
 SAND LAKE
 ITASCA COUNTY
 TWP. 147-148 N. R. 23 W. SEC. 14
 MAP NO. 8-148-147
 DATE 8-14-83

S.M. = LOWER EDGE, CENTER OF N. CROSS BEAM ON
 PORTAGE LAKE BRIDGE, S.E. ARM OF LAKE.
 W.S. = S.M. - 7.1'
 PLANIMETERED AREA = 4,396 ACRES
 S.O.W. FILE NO. 8-148-147

FINISHED BY THE MINNESOTA
 CONSERVATION, ST. PAUL, I.
 RESPONSIBILITY IS ASSUMED FOR
 THE DATA SHOWN OR FOR
 REPRODUCTION OR ADDITIONS MADE BY OTHERS. IF
 REPRODUCED PROPER CREDIT MUST BE GIVEN.