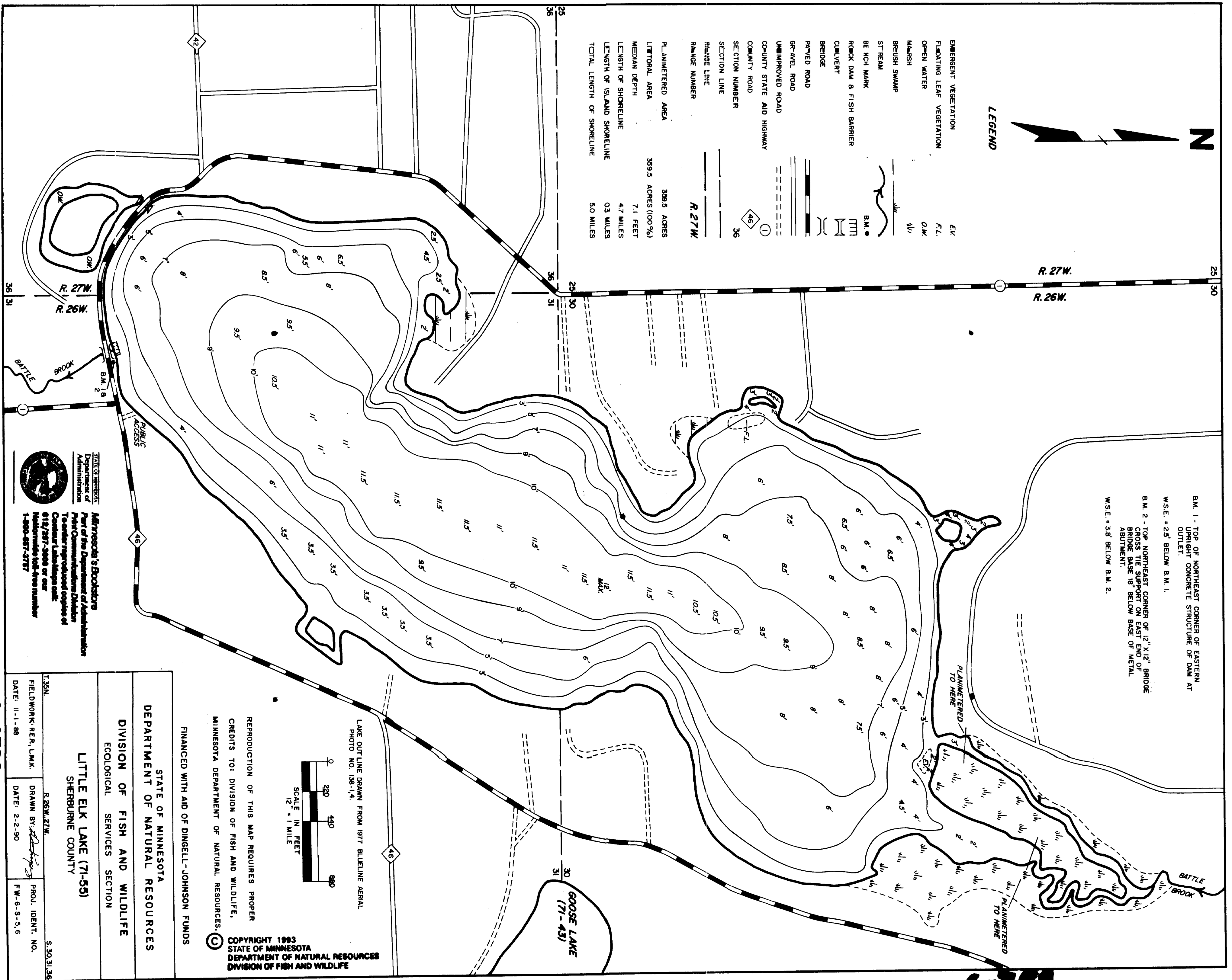




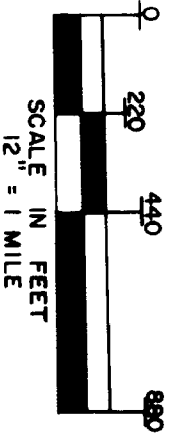
LEGEND

EMERGENT VEGETATION	EV
FLOATING LEAF VEGETATION	F.L.
OPEN WATER	O.W.
MARSH	M
BREUSH SWAMP	B.S.
STREAM	S
BENCH MARK	B.M. ●
ROCK DAM & FISH BARRIER	RD
CULVERT	C
BRIDGE	BR
PAVED ROAD	PR
GR-AVEL ROAD	GR
UNIMPROVED ROAD	UR
CO-COUNTY STATE AID HIGHWAY	CSA
COUNTY ROAD	CR
SECTION NUMBER	①
SECTION LINE	②
RANGE LINE	③
RANGE NUMBER	R. 27W
PLANNED AREA	399.5 ACRES
LITTORAL AREA	359.5 ACRES (100%)
MEDIAN DEPTH	7.1 FEET
LENGTH OF SHORELINE	4.7 MILES
LENGTH OF ISLAND SHORELINE	0.3 MILES
TOTAL LENGTH OF SHORELINE	5.0 MILES



B.M. 1 - TOP OF NORTHEAST CORNER OF EASTERN UPRIGHT CONCRETE STRUCTURE OF DAM AT OUTLET.
 W.S.E. = 2.5' BELOW B.M. 1.
 B.M. 2 - TOP NORTHEAST CORNER OF 12" X 12" BRIDGE CROSS TIE SUPPORT ON EAST END OF BRIDGE BASE 18" BELOW BASE OF METAL ABUTMENT.
 W.S.E. = 3.8' BELOW B.M. 2.

LAKE OUTLINE DRAWN FROM 1977 BLUELINE AERIAL PHOTO NO. 138-14.



REPRODUCTION OF THIS MAP REQUIRES PROPER CREDITS TO: DIVISION OF FISH AND WILDLIFE, MINNESOTA DEPARTMENT OF NATURAL RESOURCES.

FINANCED WITH AID OF DINGELL-JOHNSON FUNDS

STATE OF MINNESOTA
 DEPARTMENT OF NATURAL RESOURCES
 DIVISION OF FISH AND WILDLIFE
 ECOLOGICAL SERVICES SECTION

LITTLE ELK LAKE (71-55)
 SHERBURNE COUNTY

T.35N. R.26W.27W. S.30.31.36
 FIELDWORK: R.E.R., L.M.K. DRAWN BY: [Signature] PROJ. IDENT. NO. F.W.-6-S-5.6
 DATE: 11-1-88 DATE: 2-2-90

STATE OF MINNESOTA
 Department of Administration
 Minnesota's Bookstore
 Part of the Department of Administration
 Print Communications Division
 To order reproduced copies of
 Contact Linda Hagen at:
 612/297-2999 or our
 toll-free number
 1-800-657-3757



C-0789

C-0789